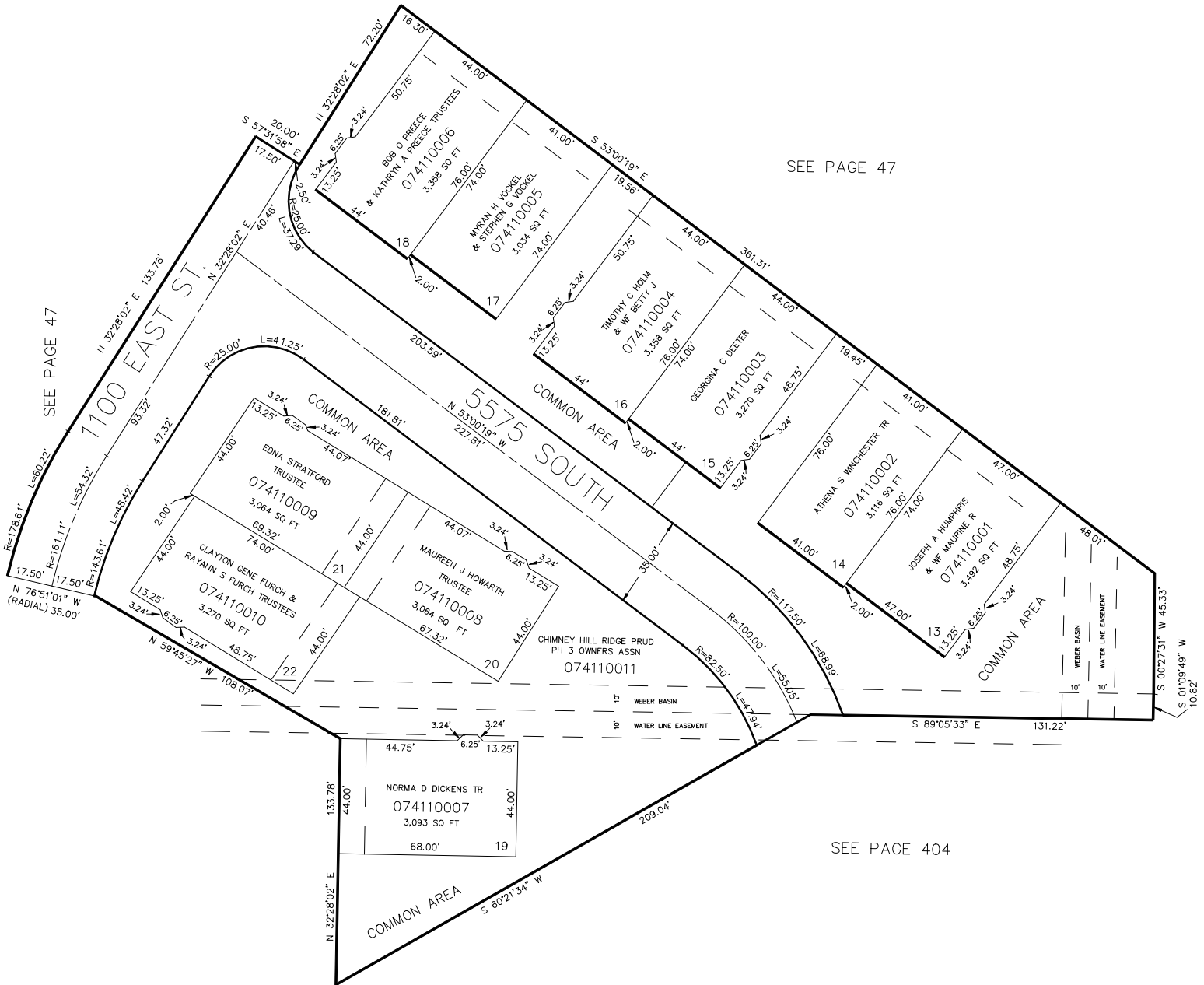


PART OF THE NE.1/4, SEC. 21, T.5N., R.1W., &
PART OF THE SE.1/4, SEC. 16, T.5N., R.1W., S.L.B. & M.
CHIMNEY HILL RIDGE PRUD, PHASE III

TAXING UNIT: 27

IN SOUTH OGDEN CITY
SCALE 1" = 30'



SEE PAGE 47

SEE PAGE 404

10' WEBER BASIN WATER LINE EASEMENTS
AS INDICATED BY DASHED LINES.
ALSO: 10' SUBDIVISION IRRIGATION EASEMENTS
AT ENDS OF CONDOMINIUM UNITS AS SHOWN
BY DASHED LINES.

FOR COMPLETE ENG DATA SEE
ORIGINAL DEDICATION PLAT IN
BOOK 34, PAGE 80 OF RECORDS.